

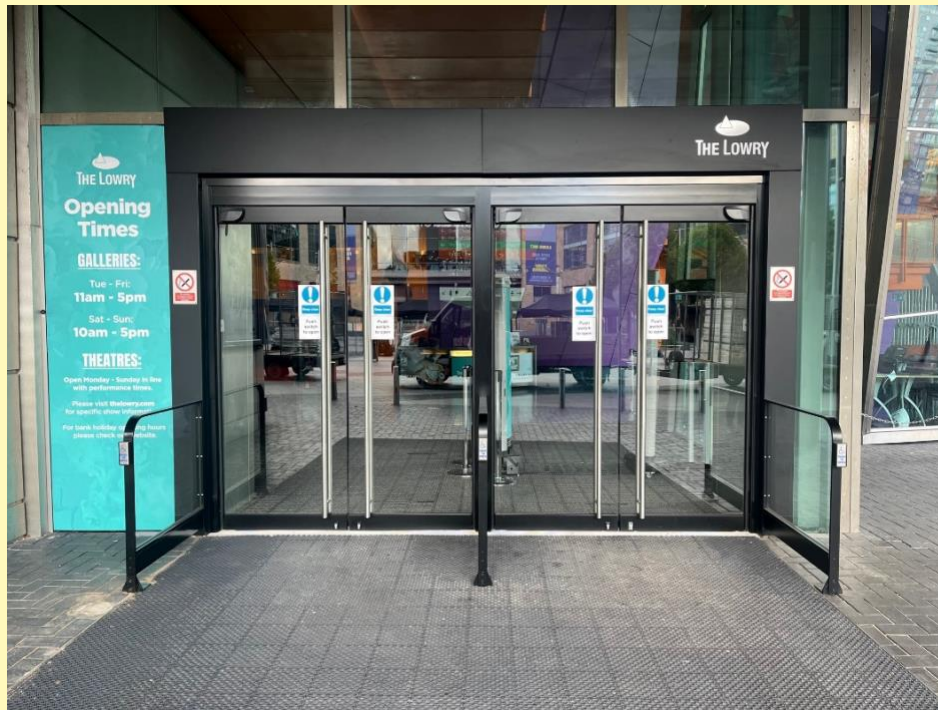
Mixing Colours Exhibition Visual Story



Welcome to The Lowry -

This **Visual Story** will give you guide of how to get to the **Mixing Colours Exhibition**.

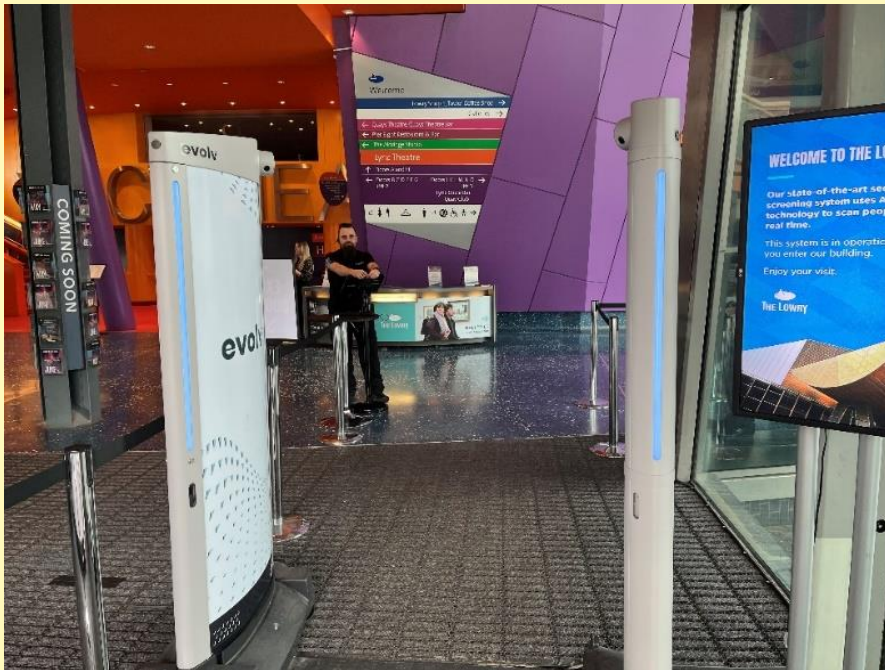
It's also free to visit the Galleries if you would like to pop in after.



The Lowry has one main entrance that is at street level with step-free access.

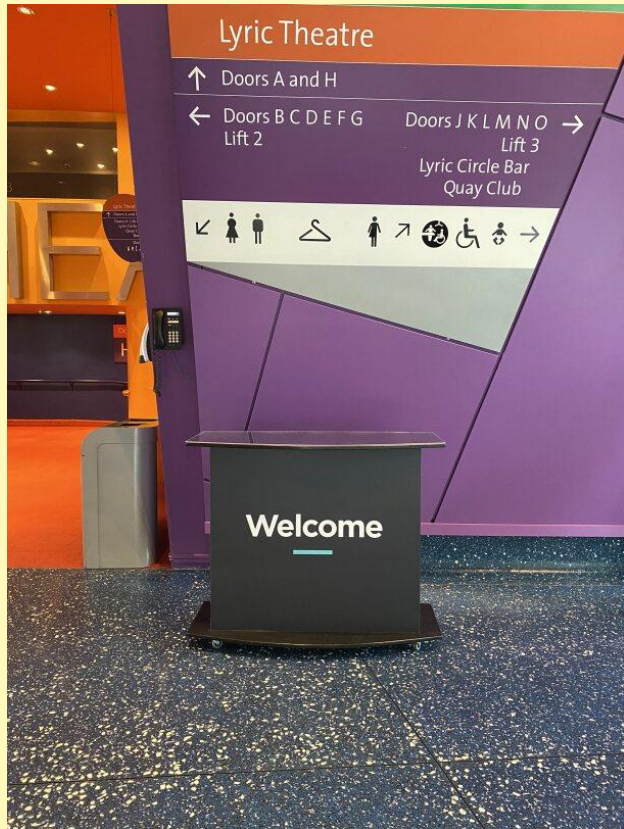
This floor is a largely level surface with tactile paving.

There is textured matt flooring in the entrance to The Lowry building and the doors are automatic when activated by a push-button.



When you enter the building there will be friendly members of the **Security Team** to greet you.

You may be asked to open your bag so it can be checked, but don't worry the team are doing this to help keep visitors safe.



When you have gone past security, you will see the Welcome Desk.

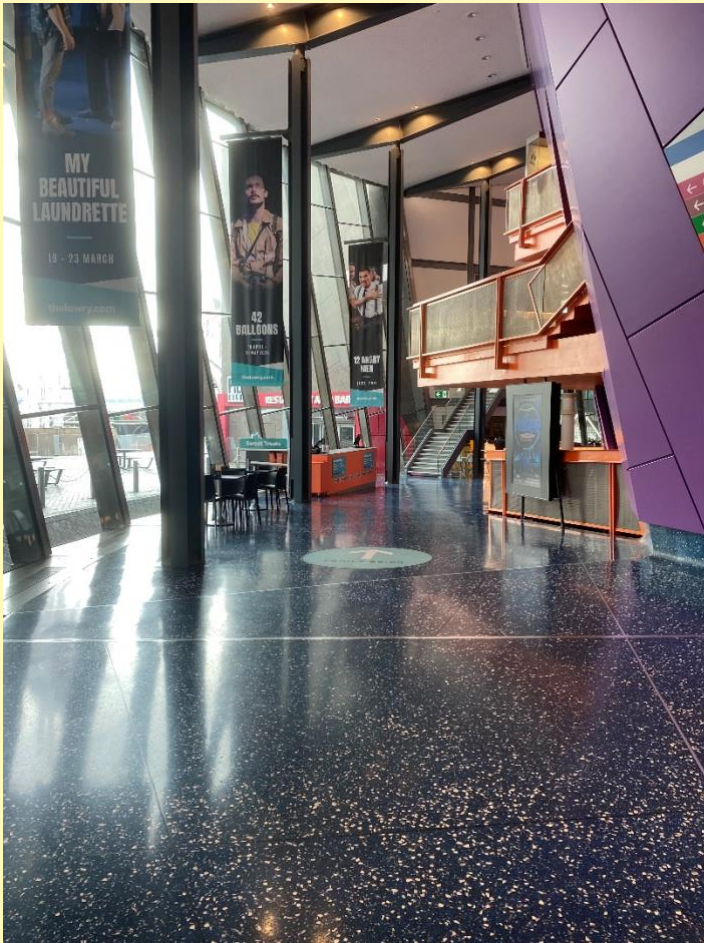
This is where you will find members of the Front of House Team who are there to help you.



The **Front of House** team are here during opening hours to welcome you and offer assistance.

They can help you find your way around the building.

They will be wearing **red or purple** tops as seen in the image.



Once you have entered the building turn **left** towards the Pier 8 Restaurant.

There are big windows, and the floor is reflective and hard.

It is very colourful with colours purple, orange and blue decorating the interior.



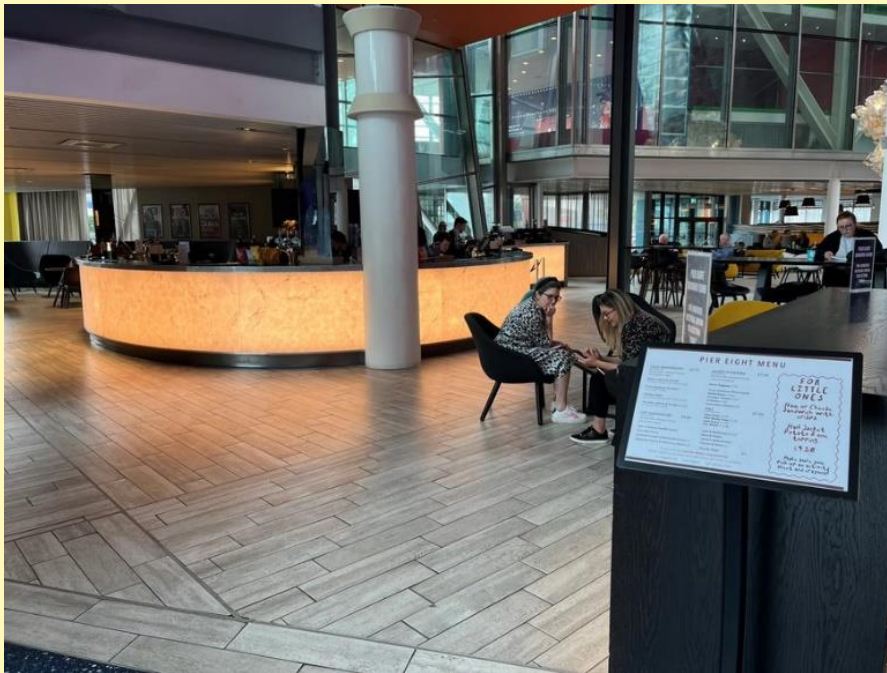
When you have walked towards the Pier 8 Restaurant, you will see a staircase to the left that leads up to **The Aldridge Studio**.

Walk up these stairs to begin your journey to the Exhibition.

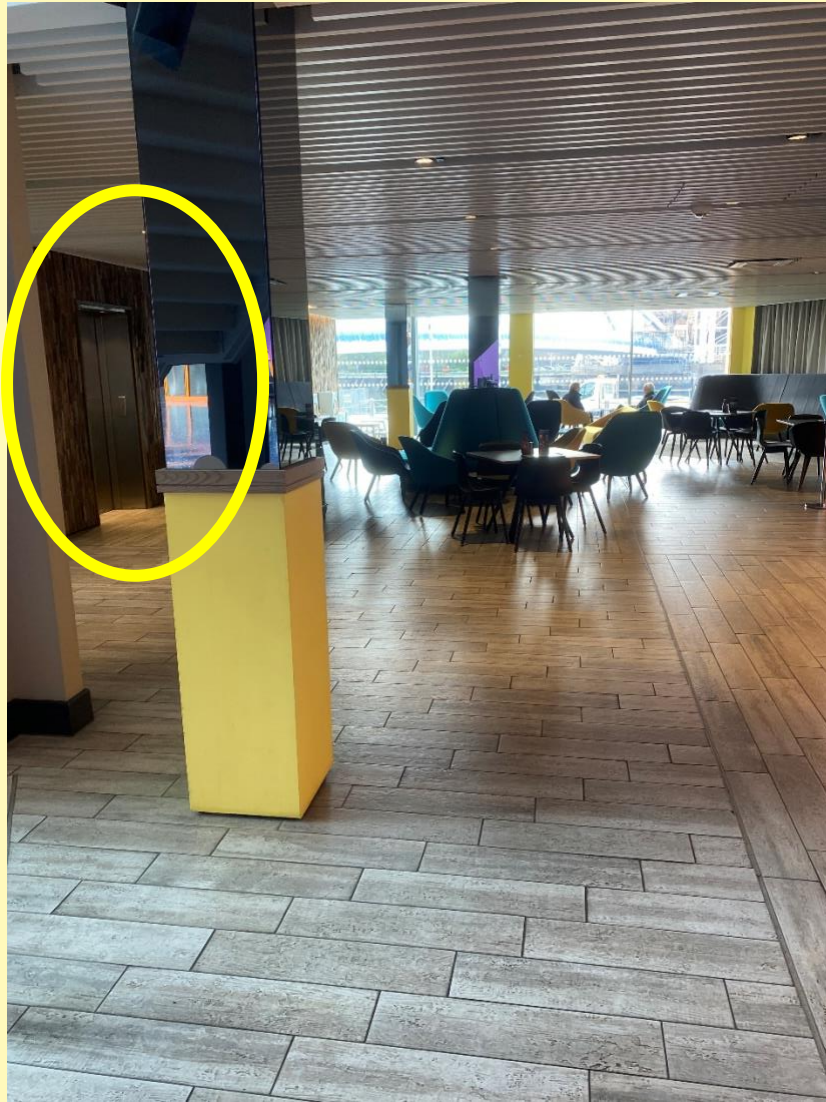
(Route with steps continued on pg.)

For step free access continue reading the visual story!

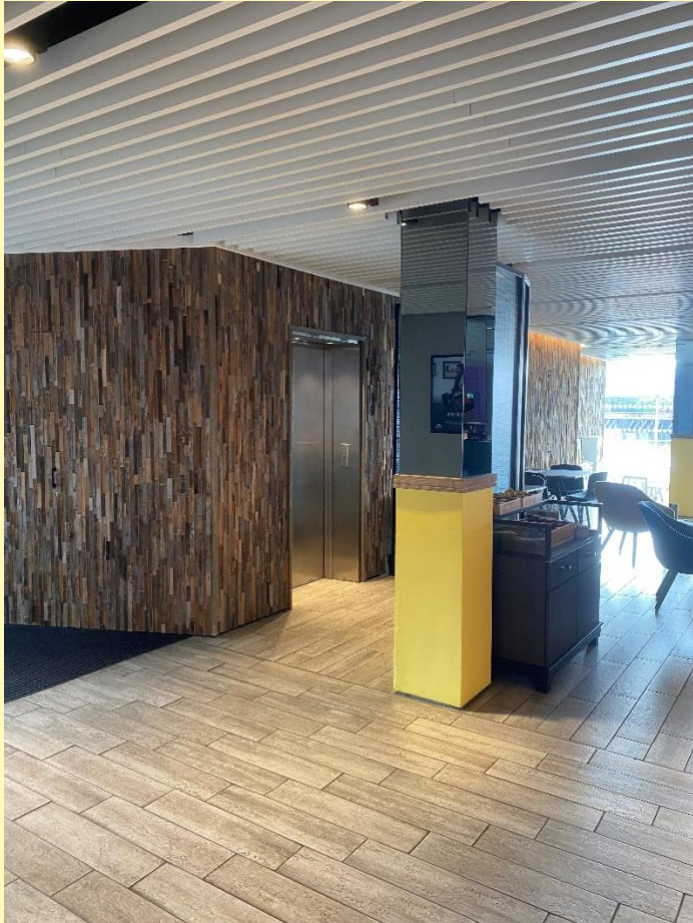
Step Free Access



For step-free access to The Aldridge Studio, enter into Pier 8 Restaurant.



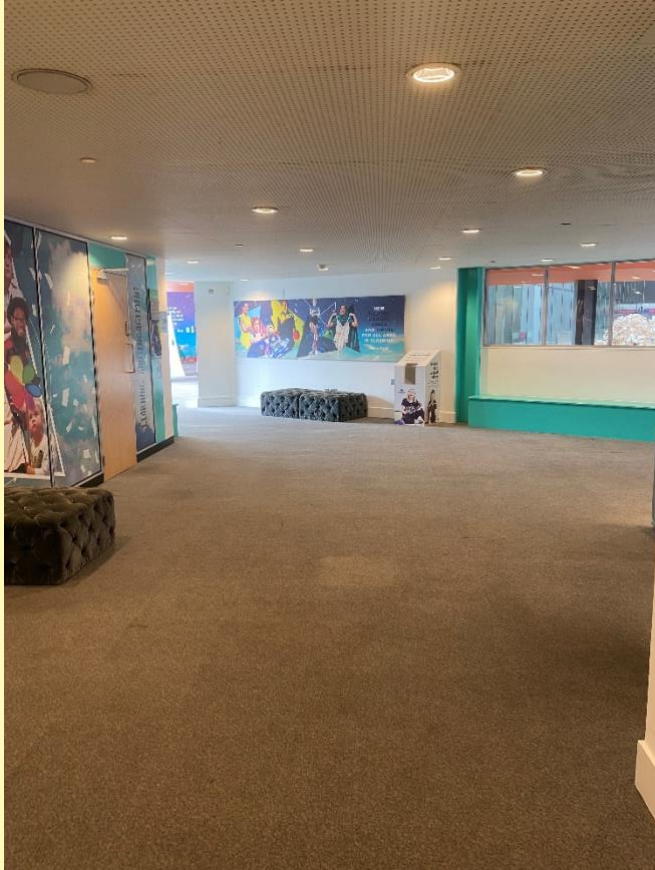
Once inside Pier 8, turn left towards the windows and you will see a lift slightly hidden along the left wall (circled in the image).



Do not hesitate to use this lift!

Although it is slightly hidden, it is available for public use.

Press level 1 when you are inside the lift and this will take you up to the first level of The Aldridge Studios.



Route out of the lift

When you exit the lift, you will see exit onto this carpeted level.

Walk straight ahead towards the walkway and windows which veer to the left.



Route from the stairs

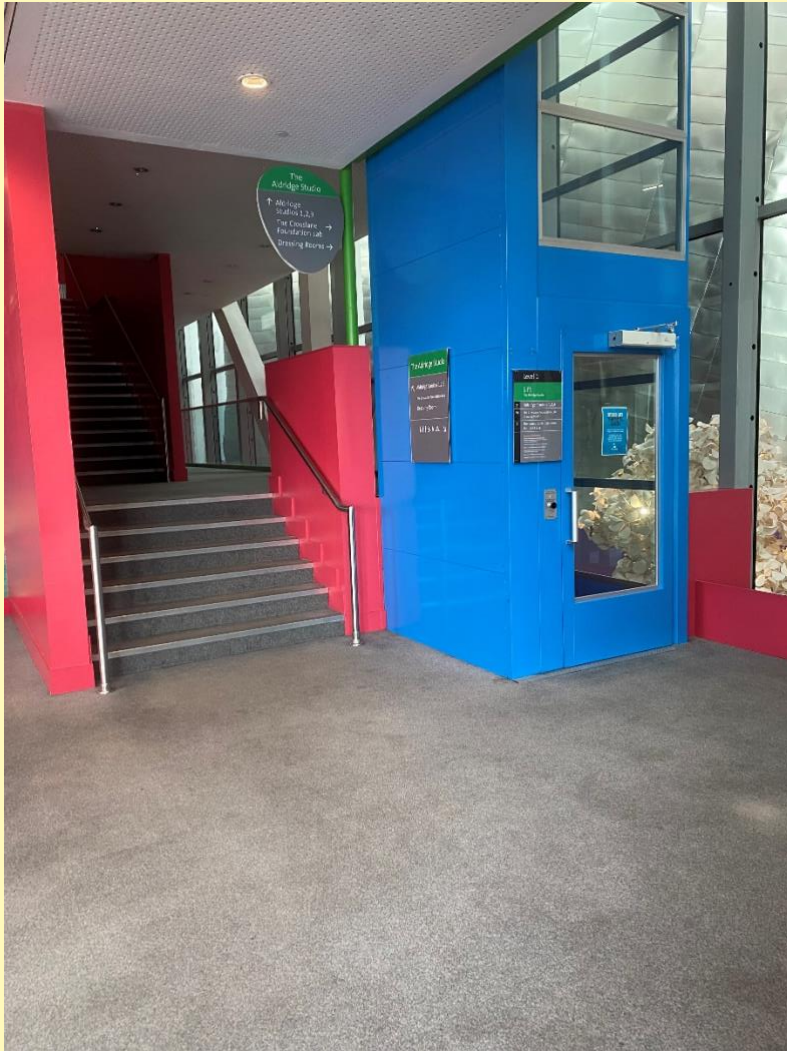
If you have gone up the stairs, you will come to a carpeted area that looks like this.

Walk towards the window to get closer to the *Mixing Colours* Exhibition.



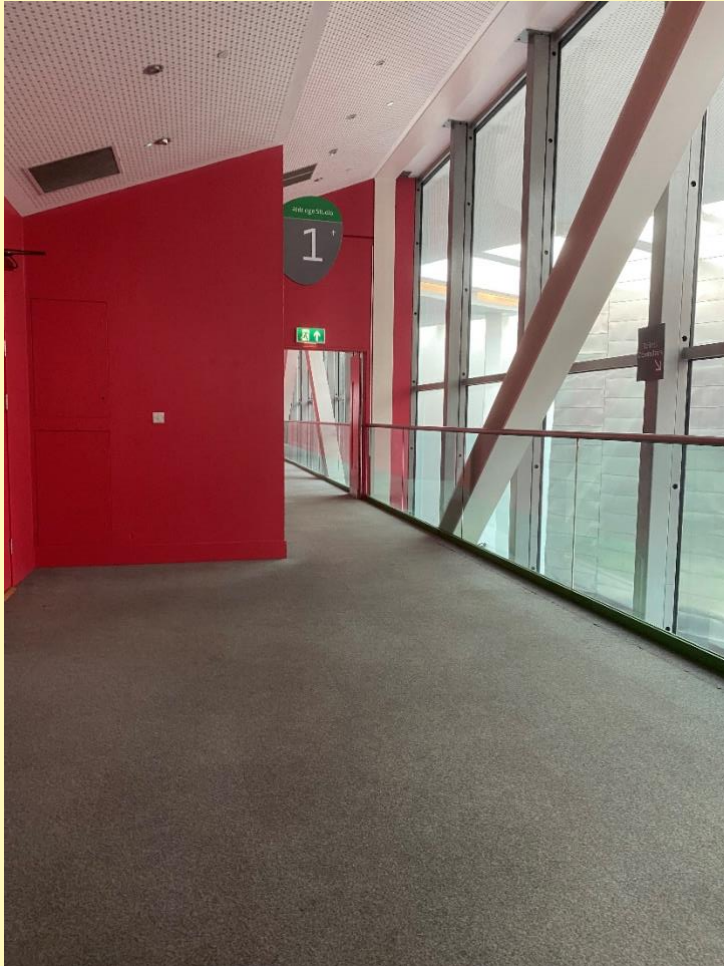
Once you reach the window follow the walkway round.

You will see a view of the Quays outside the window and, if it's a sunny day, it will be bright and warm!



When you have walked along the walkway you will see a blue lift and some stairs.

Either use the lift or the two sets of stairs to go up to The Studios.



Once you have reached the top of the stairs you will see Studio 1.

You're nearly there! Just walk along the walkway and you'll see the red wall that *Mixing Colours* is displayed on.



You made it!

Walk along the carpeted walkway and, on the red wall on your left, you will find the Mixing Colours Exhibition!