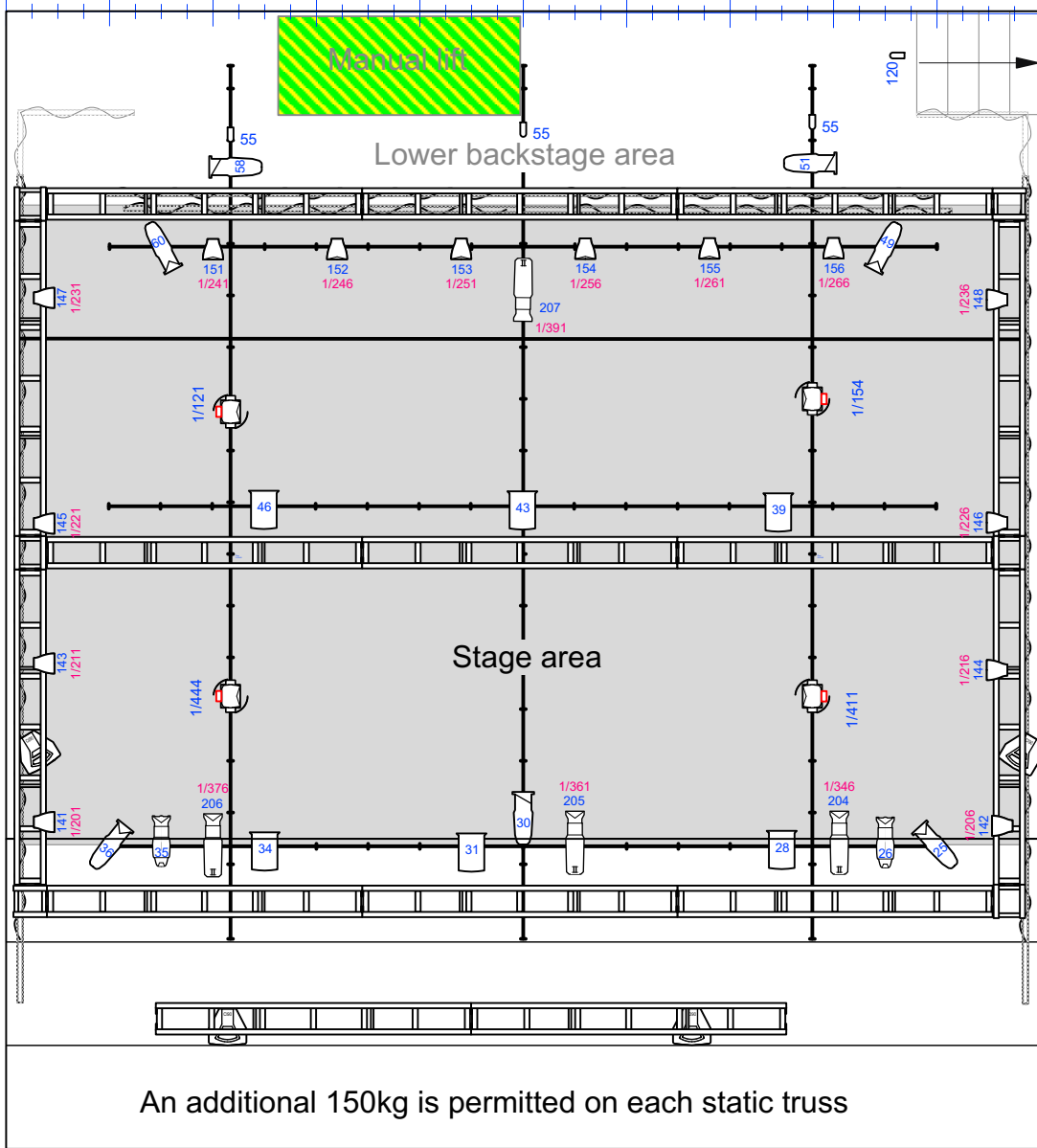
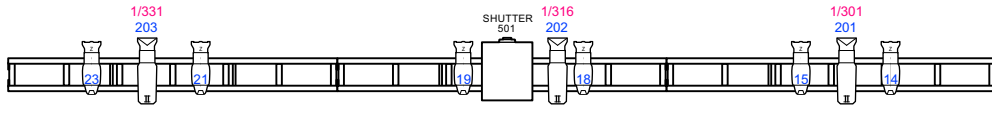


Upper backstage area

5000 4000 3000 2000 1000 0 1000 2000 3000 4000 5000



4000 3000 2000 1000 0 1000 2000 3000 4000 5000 6000 7000 8000 9000



- | | | | | | |
|--|-------------------------------------|----------|--|-------------------------------|---------|
| | ETC ColorSource PAR
Narrow Round | 3.8Kg | | ETC Source4 Jr 50deg | 4.54 kg |
| | ETC ColorSource PAR
Wide Oval | 3.8Kg | | ETC Source4 Jr Zoom | 4.54 kg |
| | ETC Source4 LED2LS
36deg | 10.6Kg | | Strand SL 15/32 Zoom | 6.80 kg |
| | ETC Source4 LED2LS
50deg | 10.6Kg | | Strand SL 23/50 | 6.80 kg |
| | Selecon Rama 6" Fresnel | 4.99 kg | | USITT PAR MR-16
Birdie-MFL | |
| | Chauvet Rogue R2X
Wash VW | 10.34 kg | | | |

The Aldridge studio

The Aldridge studio has a fixed rig as it has a UDL of 1500KG,

Additional weight capacity:
40Kg: down stage
40Kg: mid stage
40Kg: Up stage

Anything over 40Kg in these areas must be substituted by derigging an equal amount of weight from the fixed rig

House light dimmers
104, 105, 106, 119

Extra seats DD&EE:
120

119 should have a proportion of 40%

Working light addresses
101, 102, 103
55 (rear birdies behind the screen)



Not to scale